

LC

Front-Load, Automatic, Aqueous Parts Washers for Extra-Heavy and Extra-Large Capacity

- Up to 60" Working Height
- Up to 48" Turntable Basket Diameter
- Up to 2,500 lbs. Load Capacity
- Automatic Oil Skimmer



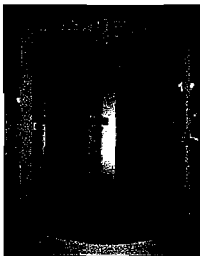
◀ **Built-in Oil Skimmer** automatically draws off floating oils in the sump

tank and deposits them in optional drain container for safe disposal.

■ **Rugged Turntable Drive** features a torque limiter that protects the gear motor in case of jamming.

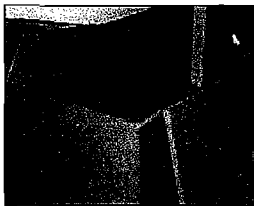
■ **Front-access Drain Cap** facilitates emptying and flushing of double-pitch sump floor.

■ **Conveniently located Intermediate Spray Bar** ▶ can be moved up or down to put the spray even closer to the parts in the basket; no tools needed to adjust spray bar.

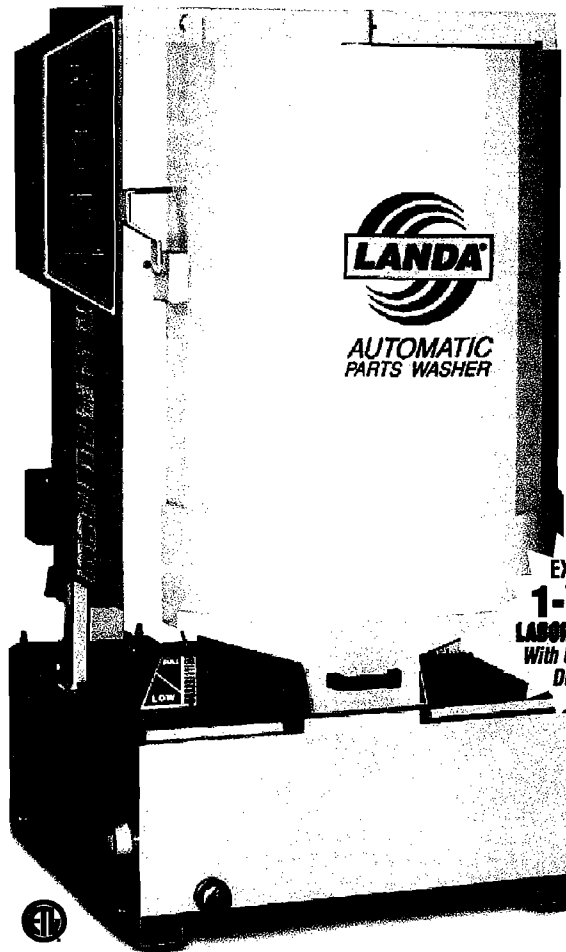


■ **High-efficiency 6-18 kW calrod Heating Element** is protected in an incoloy sheath for long life; **Adjustable Thermostat** provides consistent hot water temperature ranging from 50° to 175°F.

■ **Pull-out Debris Screen** keeps small and foreign objects from falling into the sump.



◀ **Top-entry Sump Access Panel** makes for convenient monitoring and cleaning of the sump tank.



■ **Easy access Control Panel** features: (1) Automatic one-hour **Wash Timer** for unattended operation and protection against operator neglect; (2) 12-hour **Heater Timer** that turns off heater when not in operation for long periods for energy savings; (3) **Oil Skimmer Timer**; (4) **Turntable Jog Switch** (larger models only); and (5) **Low-Water Alert and Shutoff** to protect heating element should the water level drop too low.

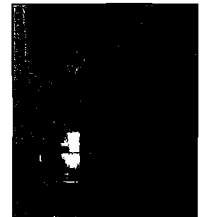
■ **Time-tested, 3-7.5 HP Vertical Seal-less Pump** delivers a water flow of 50 to 200 GPM, depending on model, with less maintenance than pumps used in conventional parts washers.

■ **Heavy-duty Sump Tank**, made of 7 gauge steel in larger models, has double-pitched floor for convenience in draining wastewater.

■ 12 to 26 precision **Spray Nozzles** provide a surround cleaning effect for optimum cleaning capability.

■ **Quick view Sump Level Gauge** monitors the water level in the sump tank for additional equipment protection.

■ **Recessed Base** ▶ provides ample foot clearance for easy loading and unloading of parts.



■ **Cabinet is made of Rugged Steel** protected by a durable, high-quality, rust-resistant paint with a fine automotive finish.

■ **Sturdy, hard-plastic Wheels** help in moving the unit away from a wall or around the shop. (not included on LC-4860)

■ **Unique Roll-in Door** that saves space, allows you to use a chain hoist for loading parts, and prevents water from dripping on the shop floor.

**EXTENDED
1-YEAR
LABOR WARRANTY
With Use of Landa
Detergents**

HYDRO-CHEM SYSTEMS, INC.
3800 Clay Ave. #2
Greenfield, MA 01302
800-852-8888 FAX 413-519-1122
www.landacleaning.com

LANDA®

CLEANING SYSTEMS

Since 1969

Industrial Pressure Washers and Parts Washers
...Built Right to Do the Job Right

LC

Front-Load, Automatic, Aqueous Parts Washers for Extra-Heavy and Extra-Large Capacity

- Up to 60" Working Height
- Up to 48" Turntable Basket Diameter
- Up to 2,500 lbs. Load Capacity
- Automatic Oil Skimmer

WHY CHOOSE LANDA'S AUTOMATIC FRONT-LOAD PARTS WASHERS

For more than a quarter of a century Landa has been solving the cleaning challenges for hundreds of thousands of customers with industrial pressure washers and automatic, aqueous parts washers. Landa front-load parts washers, with their roll-in door, are ideal for shops because they are:

■ **BUILT TO LAST:** The line is backed by a 1-year warranty when Landa detergents are used exclusively; all models are protected by a two-step, liquid, heat-, moisture- and rust-resistant paint with a fine automotive finish;

■ **ENVIRONMENTALLY FRIENDLY:** No solvents are used providing a safe environment for workers and a reduction in disposal concerns;

■ **HIGHLY EFFECTIVE:** Combined with Landa's powerful industrial detergents, the front-load washers use 12-26 precision-spray nozzles to blast dirt, grime and grease from parts eliminating the need for scrubbing by hand;

■ **AUTOMATED:** The one-hour timer allows workers to place parts inside the parts washer for cleaning while they keep working.

Specifications for Front-Load Models

Part No.	GPM	PSI	Turntable Diameter	Working Height	Load Capacity	Tank Capacity	Electrical Volt/Ph/Amps	Nozzle Quantity	Pump HP	Heating Element	Dimensions H x W x D	Shipping Weight
LC-2530A*	50	45	25"	30"	500 lbs.	40 gal.	230V/1ph/38	12	3	6 kW	65" x 45" x 48"	779 lbs.
LC-2840A*	50	45	28"	40"	750 lbs.	50 gal.	230V/1ph/38	12	3	6 kW	75" x 50" x 51"	850 lbs.
LC-2848A*	110	50	28"	48"	750 lbs.	50 gal.	230V/1ph/58	18	5	9 kW	83" x 50" x 51"	929 lbs.
LC-4860B*	200	50	48"	60"	2500 lbs.	156 gal.	230V/3ph/67	26	7.5	18 kW	106" x 66" x 75"	2263 lbs.

* Most models are also available with 230V 3ph, 460V 3ph and 575V 3ph electrical configurations.

FACTORY OPTIONS: Customize for your specific application



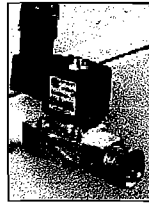
Dual Turntable adds a second turntable for greater capacity



Sump Sweep & Filter blasts sediment from sump floor and filters it (filter available alone)



7-Day Timer turns heater and skimmer on and off at pre-set times



Auto-Water Fill automatically replenishes tank should water level drop

Height Extension
Increases working height of the LC-2848 or LC-4860 cabinet by 12"

4-Hook Parts Tree
to hang parts for better spacing and total wash coverage

Containment Rings keep parts on turntable

Note: We are constantly improving and updating our products. Consequently, pictures, features, and specifications in this brochure may differ slightly from current models. Flow rates and pressure ratings may vary due to variances allowed by manufacturers of our machine components. We attempt to keep our machine performance within ±5% of listed specifications.

LANDA

CLEANING SYSTEMS

Distributed by:

HYDRO-CHEM SYSTEMS, INC.
5550 Clay Ave., S.W.
Grand Rapids, MI 49548
Ph: 616-531-6420 Fax: 616-531-6692
www.hydrochemsystems.com

DETERGENTS: Specially formulated for automatic parts washing



Landa offers a number of highly effective, biodegradable detergents specifically formulated for use in automatic parts washers. The Landa blends are engineered with an exclusive, multi-metal, corrosion inhibitor package and come highly concentrated to give you more cleaning with less soap.

www.landa.com

Form #89137960 (#96-0145) • © Copyright 2007 • 6/07